

## Guillotine Door

EN 13501-2  
Classification  
EI<sub>1</sub>60 EI<sub>2</sub>60

## Typology



Fire Test EN 1634-1

## CTE DB SI

According to the requirements established in the Basic Fire Safety Document of the Technical Building Code [CTE DB SI].

## Test Report

APPLUS 18/18365-2120

## Extension Report

## Classification Report

APPLUS 18/18365-2120-3 M1

## CE Performance Conformity Certificate

0370-CPR-3536

## ALFATORRES Metal single leaf guillotine fire door GEI-60 model.

Tested according to UNE-EN 1634-1 and classified as fire resistant **EI<sub>2</sub>60** according to UNE EN 13501-2. The leaf consists of a system of our own panels, which are made of galvanized sheet metal that is 1.2 mm thick. They are filled with rock wool and laminated calcium materials. The dedicated perimeter profile, which is made of galvanized steel that is 2 mm thick, makes the assembly very rigid.

Lateral guides that are designed to be integrated into the system of lateral boxes that house the counterweights. This system also includes the anti-fall mechanism. Bearings to facilitate the continuous and smooth movement of the assembly. Upper overlaps made from galvanised sheet metal with intumescent sealing joint.

Dual system of counterweights and internal cables, using pulleys located inside the sheet metal box and adjustable cover.

Approved activation:

- using electromagnet and speed regulator.
- Reset manually using chain.

## POSSIBLE CONFIGURATIONS

- Motorised activation
- Automatic or manual electrical reset
- Manufactured in sections to facilitate installation.

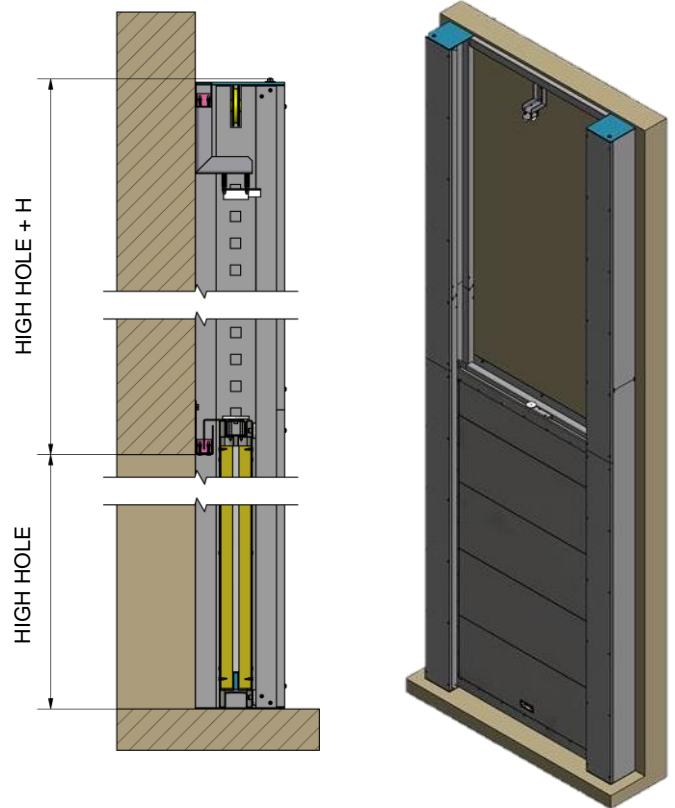
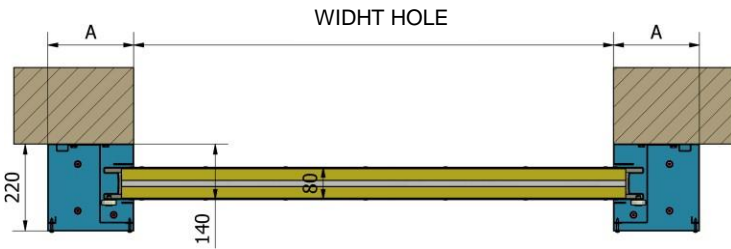
Fire Door Product  
Technical Data

## Guillotine Door

EN 13501-2 Classification  
EI<sub>1</sub>60 EI<sub>2</sub>60

Typology  
1 leaf

### Layout sketch for single leaf guillotine doors



- PULLEY DM. 100
- PULLEY DM. 120
- PULLEY DM. 150
- PULLEY DM. 200
- PULLEY DM. 230
- PULLEY DM. 250

HIGH HOLE	1000		1250		1500		1750		2000		2250		2500		2750		3000		3250		3500		3750		4000		4250		4500		4750		5000			
	H	A	H	A	H	A	H	A	H	A	H	A	H	A	H	A	H	A	H	A	H	A	H	A	H	A	H	A	H	A	H	A				
1000	380	215	380	215	380	215	380	215	380	215	380	215	380	215	380	215	380	215	380	215	380	215	380	215	380	215	380	215	380	215	380	215	380	215		
1250	380	215	380	215	380	215	380	215	380	215	380	215	380	215	380	215	380	215	380	215	380	215	380	215	380	215	380	215	380	215	380	215	380	215		
1500	380	215	380	215	380	215	380	215	380	215	380	215	380	215	380	215	380	215	380	215	380	215	380	215	380	215	380	215	380	215	380	215	380	215		
1750	380	215	380	215	380	215	380	215	380	215	380	215	380	215	380	215	380	215	380	215	380	215	380	215	380	215	380	215	380	215	380	215	380	215		
2000	380	215	380	215	380	215	380	215	380	215	380	215	380	215	380	215	380	215	380	215	380	215	380	215	380	215	380	215	380	215	400	255	430	315		
2250	380	215	380	215	380	215	380	215	380	215	380	215	380	215	380	215	380	215	380	215	380	215	380	215	380	215	380	215	380	215	430	315	430	315	430	315
2500	400	255	400	255	400	255	400	255	400	255	400	255	400	255	400	255	400	255	400	255	400	255	400	255	400	255	400	255	400	255	400	255	400	255	400	255
2750	400	255	400	255	400	255	400	255	400	255	400	255	400	255	400	255	400	255	400	255	400	255	400	255	400	255	400	255	400	255	400	255	400	255	400	255
3000	400	255	400	255	400	255	400	255	400	255	400	255	400	255	400	255	400	255	400	255	400	255	400	255	400	255	400	255	400	255	400	255	400	255	400	255
3250	430	315	430	315	430	315	430	315	430	315	430	315	430	315	430	315	430	315	430	315	430	315	430	315	430	315	430	315	430	315	430	315	430	315	430	315
3500	430	315	430	315	430	315	430	315	430	315	430	315	430	315	430	315	430	315	430	315	430	315	430	315	430	315	430	315	430	315	430	315	430	315	430	315
3750	430	315	430	315	430	315	430	315	430	315	430	315	430	315	430	315	430	315	430	315	430	315	430	315	430	315	430	315	430	315	430	315	430	315	430	315
4000	430	315	430	315	430	315	430	315	430	315	430	315	430	315	430	315	430	315	430	315	430	315	430	315	430	315	430	315	430	315	430	315	430	315	430	315
4250	430	315	430	315	430	315	430	315	430	315	430	315	430	315	430	315	430	315	430	315	430	315	430	315	430	315	430	315	430	315	430	315	430	315	430	315
4500	430	315	430	315	430	315	430	315	430	315	430	315	430	315	430	315	430	315	430	315	430	315	430	315	430	315	430	315	430	315	430	315	430	315	430	315
4750	480	415	480	415	430	315	430	315	430	315	430	315	430	315	430	315	430	315	430	315	430	315	430	315	430	315	430	315	430	315	430	315	430	315	430	315
5000	480	415	480	415	480	415	480	415	480	415	480	415	480	415	480	415	480	415	480	415	480	415	480	415	480	415	480	415	480	415	480	415	480	415	480	415